

Lightsource Test Report

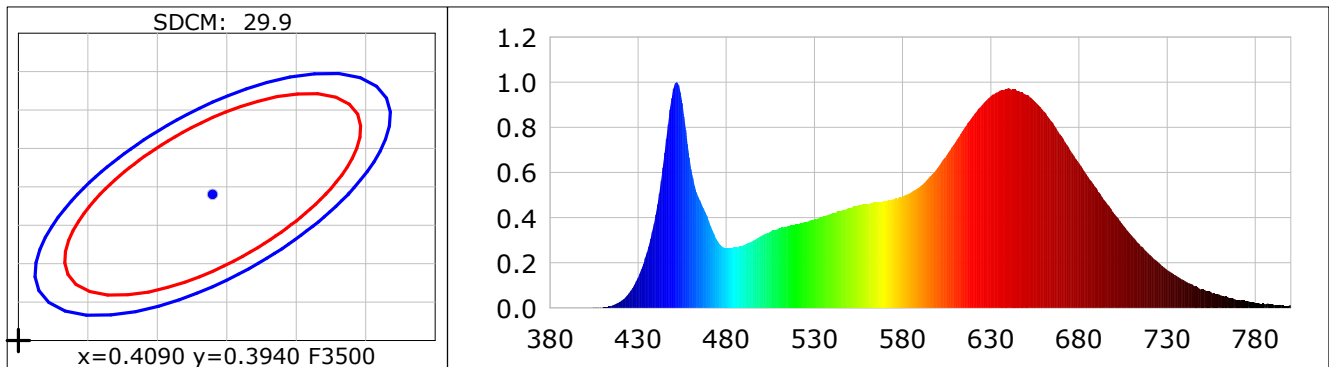
Product Information

Product Category: LED STRIP
 Product Spec: FOOD 3
 Manufacturer: TECSOLELED S.L.

Product Type: LED STRIP
 Product Number: 435
 Buyer: TECSOLELED S.L.

CIE Colorimetric Parameters

Chromaticity coordinates: $x=0.3925$ $y=0.3231$ $u(u')=0.2577$ $v=0.3182$ $v'=0.4773$
 CCT: $T_c=3135K$ ($duv=-0.02991$) Color Ratio: $R=0.283$ $G=0.669$ $B=0.048$
 Peak Wavelength: 451.7nm Half Bandwidth: 21.9nm
 Dominant Wavelength: 698.8nm Color Purity: 0.148
 CRI: $R_a=81.4$, $avgR(1\sim14)=75.2$, $avgR(1\sim15)=74.7$ TM30: $R_f=88$, $R_g=114$
 GAI: $GAI_BB_8=182.6$, $GAI_BB_15=172.0$, $GAI_EES=111.4$
 R1 =76 R2 =80 R3 =93 R4 =82 R5 =75 R6 =73 R7 =96 R8 =77
 R9 =36 R10=62 R11=77 R12=54 R13=75 R14=98 R15=69
 Color Quality Scale: $Q_a=90.4$, $Q_f=79.3$, $Q_p=111.5$, $Q_g=120.7$
 Q1 =94 Q2 =93 Q3 =84 Q4 =93 Q5 =93 Q6 =85 Q7 =87 Q8 =96
 Q9 =93 Q10=91 Q11=91 Q12=91 Q13=92 Q14=88 Q15=92



Photometric Parameters

Luminous Flux: 1070.9 lm Efficiency: 73.75 lm/W Radiant Power: 4.857 W
 Total mains efficacy: 68.29 lm/W Energy Efficiency Class: G (EU 2019/2015)

Electric Parameters

Voltage: 24.000V Current: 0.6050A Power: 14.52W
 Power Factor: 1.0000 Frequency: 0.00Hz

Test Information

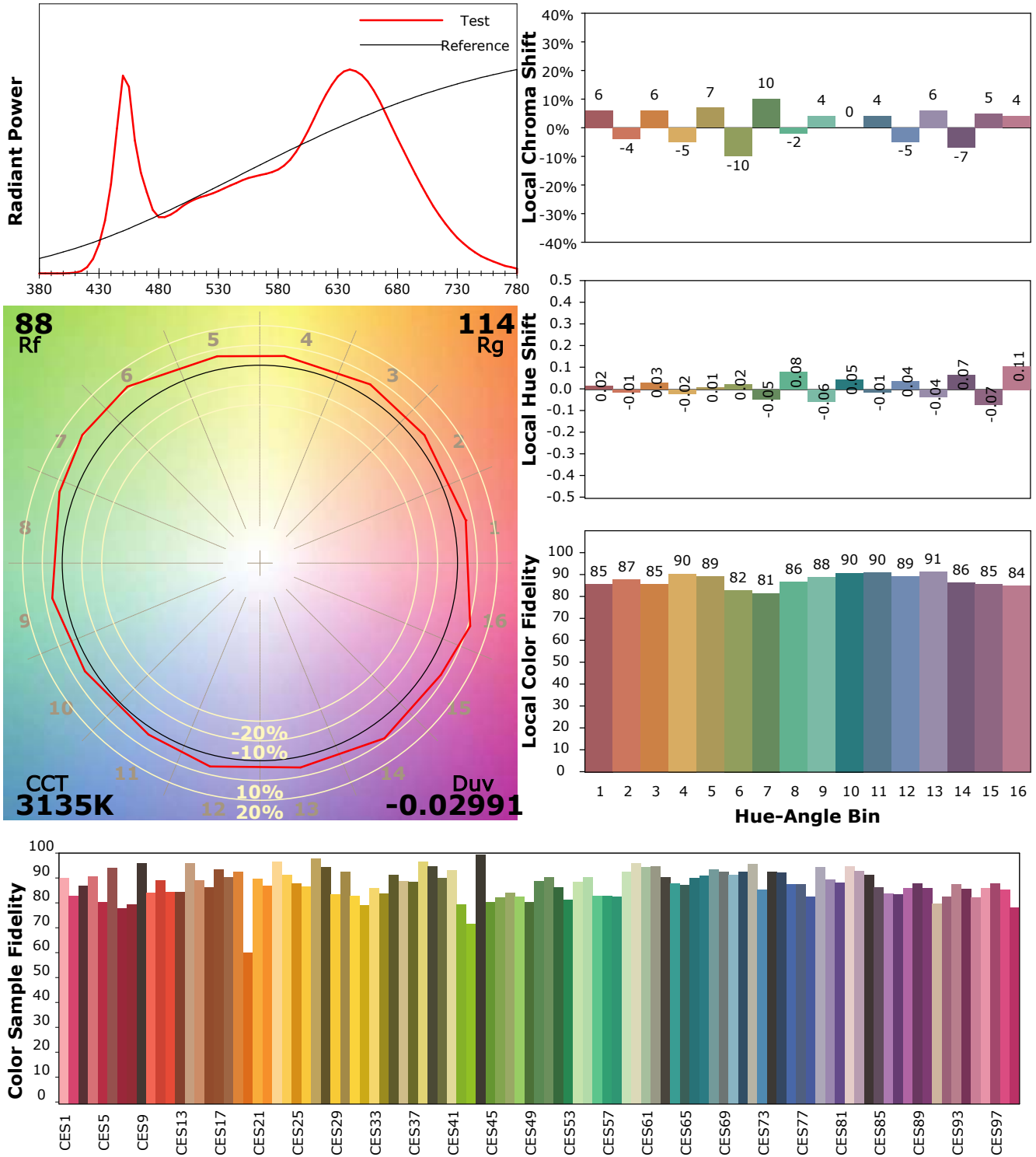
Scan Range: 380~800:1nm Photometric Method: sphere-spectroradiometer
 Stabilization Time: 0 Sec ALC.: 1.0000 Photometric Condition: Sphere diameter: 1.50m, 4PI
 Max of Signal: 46644 (2190) CCD Integration Time: 390.49 ms

IES TM-30-18 Color Rendition Report

Product Information

Product Category: LED STRIP
 Product Spec: FOOD 3
 Manufacturer: TECSOLELED S.L.

Product Type: LED STRIP
 Product Number: 435
 Buyer: TECSOLELED S.L.



Condition: Tx:19.9°C, Ti:17.7°C, R.H.:60%
 Test Lab: TECSOLELED S.L.
 Operator: JORDAN GIL DIAZ

Test Device: Inventfine CMS-2S (Plus)
 Test Time: 2021-11-09 15:38:35
 Inspector: